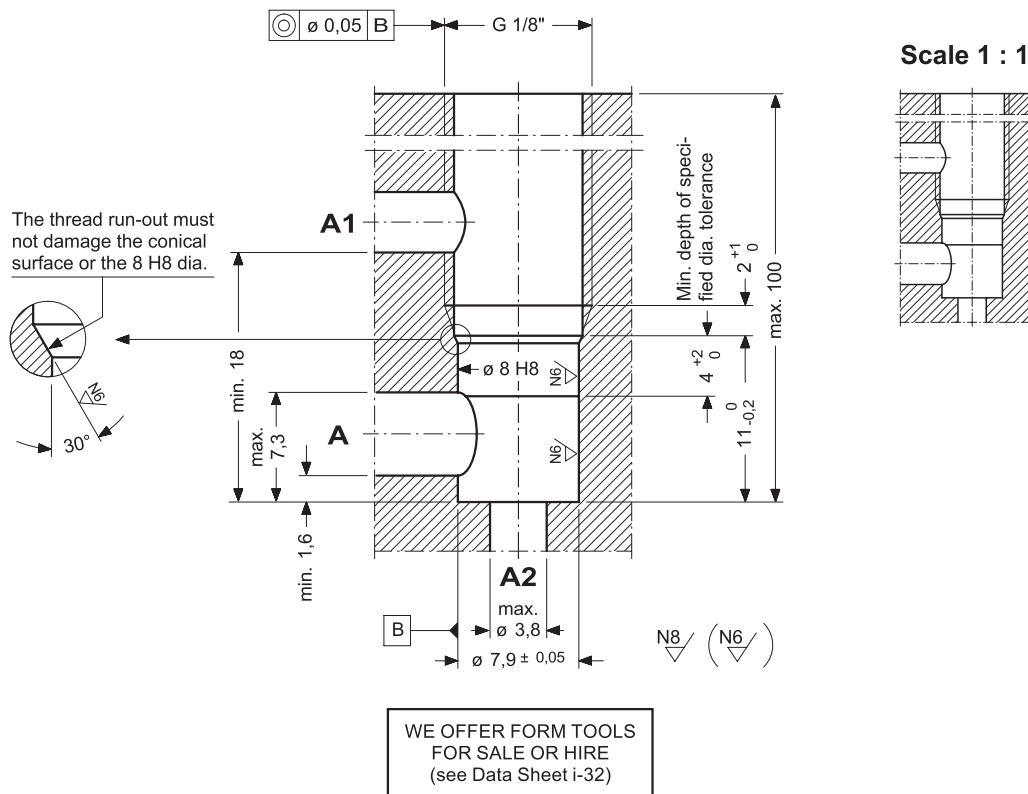


i-33.3

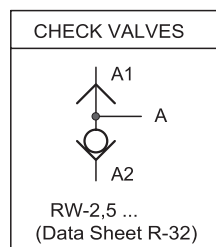
Cavity type AE

Scale 2:1



NOTE: The specified depth- and diametral tolerances are necessary to ensure trouble-free operation of the cartridge element. It is essential that pilot drilling, form boring and reaming and (where relevant) cavity thread tapping are all performed in one set-up.

CAVITY TYPE **AE** IS USED FOR THE FOLLOWING CARTRIDGE VALVES:



info.ch@bucherhydraulics.com

www.bucherhydraulics.com

© 2015 by Bucher Hydraulics AG Frutigen, CH-3714 Frutigen
All rights reserved.

Data is provided for the purpose of product description only, and must not be construed as warranted characteristics in the legal sense. The information does not relieve users from the duty of conducting their own evaluations and tests. Because the products are subject to continual improvement, we reserve the right to amend the product specifications contained in this catalogue.